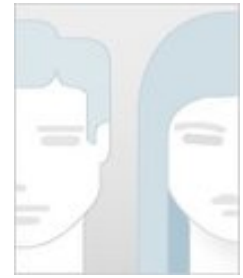


# ANA BELÉN MARTIN ÁLVAREZ

Grupo de Investigación: Estudio de las Enfermedades Hepáticas y Cáncer colorrectal. (Cod.: CTS227)

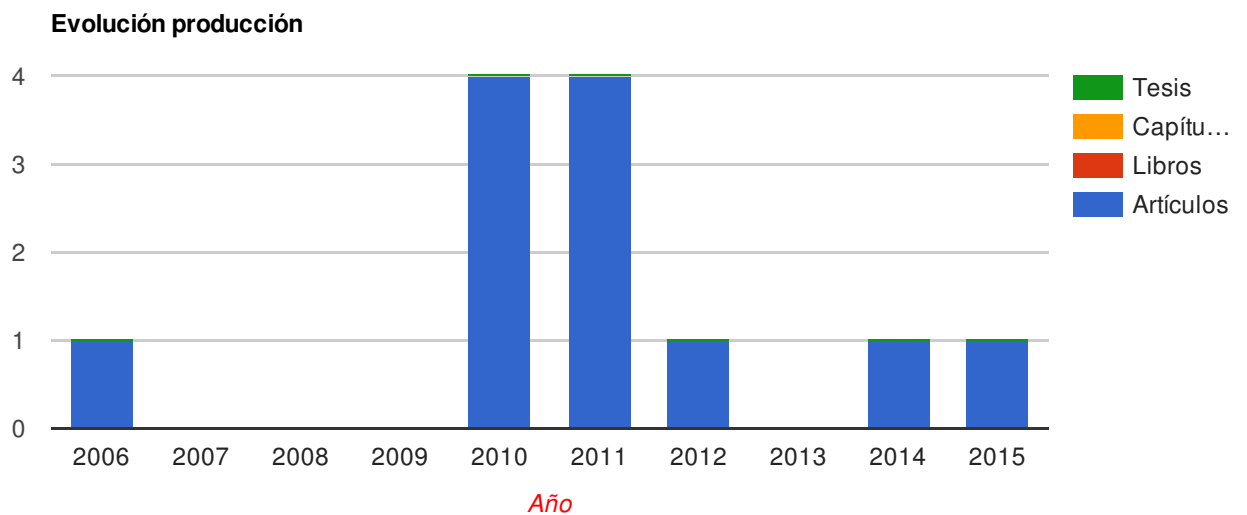
Departamento: Sistema Sanitario Público de Andalucía. Hospital Universitario San Cecilio  
Código: 47271



Ficha del Directorio

## Producción 12

Artículos (12) Libros (0) Capítulos de Libros (0) Tesis dirigidas (0)



## Proyectos dirigidos 0

Proyectos (0) Contratos (0) Convenios (0)

## Actividades 0

<b>Título publicación</b>	<b>Fuente</b>	<b>Tipo</b>	<b>Fecha</b>
Prospective study. effectiveness and safety of first-generation protease inhibitors in clinical practice: hepatitis c virus patients with advanced fibrosis	World journal of gastroenterology	Articulo	2015
Effects of ribavirin monotherapy on the viral population in patients with chronic hepatitis c genotype 1: direct sequencing and pyrosequencing of the hcv regions	Journal of medical virology	Articulo	2014
Plasma ribavirin trough concentrations during treatment of chronic hepatitis c in genotype-1 patients.	Journal of clinical gastroenterology	Articulo	2012
Factors associated with hepatic steatosis in obese children and adolescents.	Journal of pediatric gastroenterology and nutrition	Articulo	2011
Genetic variation in il28b with respect to vertical transmission of hepatitis c virus and spontaneous clearance in hcv infected children.	Hepatology	Articulo	2011
Genetic variation in interleukin 28b with respect to vertical transmission of hepatitis c virus and spontaneous clearance in hcv-infected children	Hepatology	Articulo	2011
Hepatic expression of adiponectin receptors increases with non-alcoholic fatty liver disease progression in morbid obesity in correlation with glutathione peroxidase 1.	Obesity surgery	Articulo	2011
Exosomes from human lymphoblastoid b cells express enzymatically active cd38 that is associated with signaling complexes containing cd81, hsc-70 and lyn	Experimental cell research (online)	Articulo	2010
Inhibition of poly (adp-ribose) polymerase-1 enhances doxorubicin activity against liver cancer cells	Cancer letters	Articulo	2010
Inhibition of poly adenosine diphosphate-ribose polymerase decreases hepatocellular carcinoma growth by modulation of tumor-related gene expression	Hepatology	Articulo	2010
Inhibition of poly (adp-ribose) polymerase decreases hepatocellular carcinoma growth by modulation of tumour-related gene expression.	Hepatology	Articulo	2010
Proteomic analysis of plasma from patients with systemic lupus erythematosus: increased presence of haptoglobin alpha2 polypeptide chains over the alpha1 isoforms	Proteomics	Articulo	2006

	Titulo proyecto	Tipo	Inicio	Fin
--	-----------------	------	--------	-----

Actividades 0

Titulo actividad	Fuente	Tipo	Fecha
------------------	--------	------	-------

## Colaboradores

- FRANCISCO JAVIER SALMERON ESCOBAR (10)
- ROSA QUILES PEREZ (9)
- ANGELES RUIZ EXTREMERA (8)
- JOSEFA LEÓN LÓPEZ (7)
- LAURA SANJUAN NÚÑEZ (7)
- ANGEL CARAZO GALLEGRO (6)
- JOSÉ ANTONIO MUÑOZ GÁMEZ (6)
- PALOMA MUÑOZ DE RUEDA (6)
- ANA GILA MEDINA (5)
- JORGE CASADO RUIZ (5)
- ESTHER OCETE HITA (4)
- FRANCISCO J. O&#039;VALLE RAVASSA (2)
- FRANCISCO JAVIER OLIVER POZO (2)
- DOLORES QUINTERO FUENTES (1)
- FRANCISCO DAVID MARTÍN OLIVA (1)
- JOSÉ LUIS CALLEJAS RUBIO (1)
- RICARDO SOLA GARCIA (1)
- SALVADOR ARIAS SANTIAGO (1)
- Sergio Manuel Jiménez Ruiz (1)