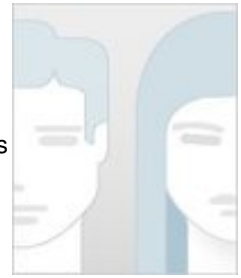


ABEL SANCHEZ-PALENCIA RAMOS

Grupo de Investigación: GENÉTICA MOLECULAR (Cod.: BIO309)

Departamento: Sistema Sanitario Público de Andalucía. Hospital Universitario Virgen de las Nieves

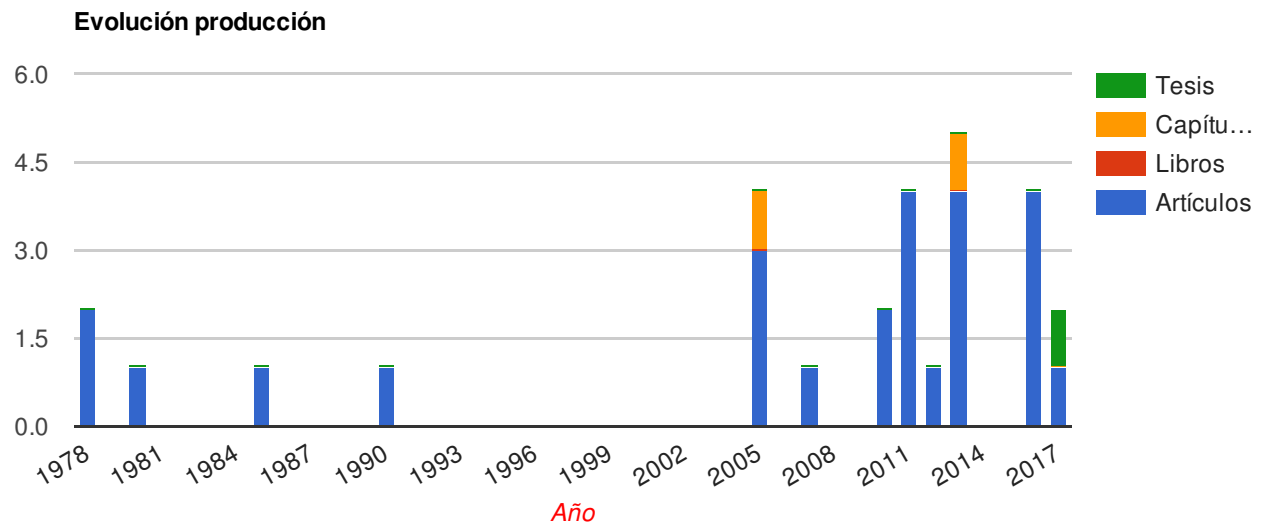
Código: 50708



Ficha del Directorio

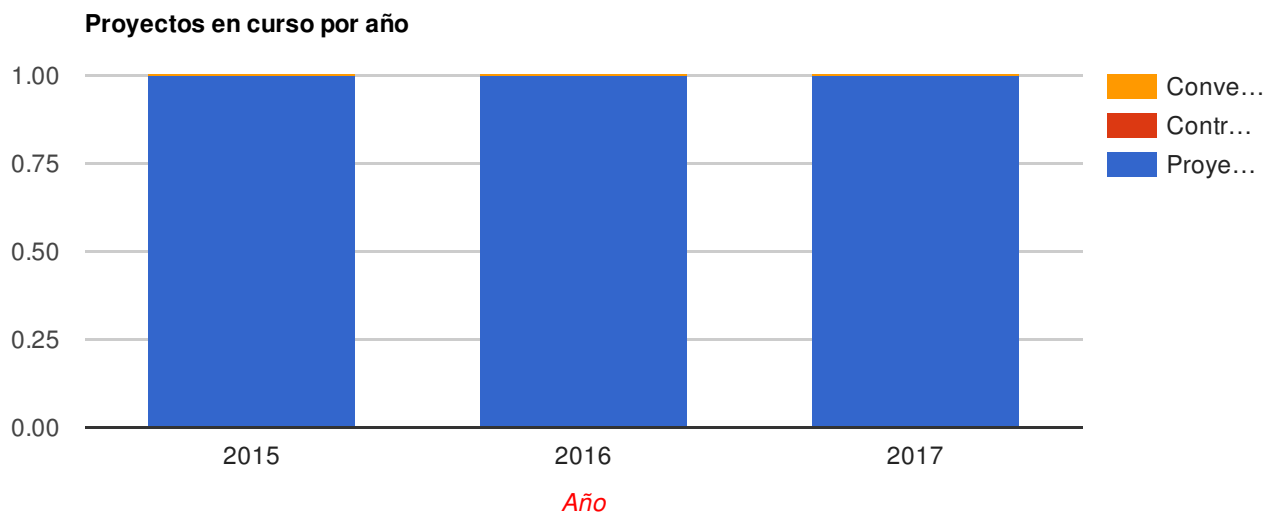
Producción 28

Artículos (25) Libros (0) Capítulos de Libros (2) Tesis dirigidas (1)



Proyectos dirigidos 1

Proyectos (1) Contratos (0) Convenios (0)



Actividades 0

Título publicación	Fuente	Tipo	Fecha
. association of circulating tumour cells with early relapse and 18f-fluorodeoxyglucose positron emission tomography uptake in resected non-small-cell lung cancers	European journal of cardio-thoracic surgery	Articulo	2017
Perfil inmunológico e implicaciones pronósticas en cáncer de pulmón.	Universidad de granada. facultad de medicina	Tesis doctoral	2017
Circulating tumor cells identify early recurrence in patients with non-small cell lung cancer undergoing radical resection		Articulo	2016
Progressive changes in composition of lymphocytes in lung tissues from patients with non-small-cell lung cancer	Oncotarget	Articulo	2016
Progressive changes in composition of lymphocytes in lung tissues from patients with non-small-cell lung cancer	Oncotarget	Articulo	2016
The absence of hla class i expression in non-small cell lung cancer correlates with the tumor tissue structure and the pattern of t cell infiltration.		Articulo	2016
Derrame pleural tuberculoso	Patología de la pleura	Capítulo de libro	2013
Differential immunohistochemical localization of desmosomal plaque-related proteins in non-small-cell lung cancer.	Histopathology	Articulo	2013
Surgical adhesive may cause false positives in integrated positron emission tomography and computed tomography after lung cancer resection	European journal of cardio-thoracic surgery	Articulo	2013
Surgical management of descending necrotizing mediastinitis.	Cirugía española	Articulo	2013
Survival, classifications, and desmosomal plaque genes in non-small cell lung cancer	International journal of medical sciences	Articulo	2013
Surgical adhesive may cause false positives in integrated positron emission tomography and computed tomography after lung cancer resection	European journal of cardio-thoracic surgery	Articulo	2012
Composite anatomical-clinical-molecular prognostic model in nonsmall cell lung cancer	The european respiratory journal	Articulo	2011
Estudio pet-tac en un caso de sospecha de diseminación metastásica ante la presencia de múltiples nódulos pulmonares.	Rev. esp. med. nucl.	Articulo	2011
Gene expression profiling reveals novel biomarkers in non-small cell lung cancer	International journal of cancer	Articulo	2011
Gene expression profiling reveals novel biomarkers in nonsmall cell lung cancer	International journal of cancer	Articulo	2011
Pet-ct scan in a case of suspicion of metastatic dissemination due to the presence of multiple pulmonary nodules	Rev esp med nucl	Articulo	2010
Preoperative chemotherapy plus surgery versus surgery plus adjuvant chemotherapy versus surgery alone in early-stage non-small-cell lung cancer	Jco	Articulo	2010
Diagnosis efficacy of structural (ct) and functional (fdg-pet) imaging methods in the thoracic and extrathoracic staging of non-small cell lung cancer.	Clinical & translational oncology	Articulo	2007
Carcinoma broncogénico de células no pequeñas	Algoritmos en diagnóstico por la imagen	Capítulo de libro	2005
Prognostic value of chronic obstructive pulmonary disease in 2994 cases of lung cancer	European journal of cardio-thoracic surgery	Articulo	2005
Survival of 2,991 patients with surgical lung cancer. the denominator effect in survival	Chest	Articulo	2005

Type of resection and prognosis in lung cancer. experience of a multicentre study.	European journal of cardio-thoracic surgery	Articulo	2005
Valor pronostico de la citometría de flujo del dna en el carcinoma broncogénico	Neumosur	Articulo	1990
Quilotórax postoperatorio: corrección quirúrgica.	Archivos de bronconeumología	Articulo	1985
Asistencia circulatoria mediante un trasplante cardiaco en paralelo	Revista española de cardiología	Articulo	1980
Quemodectoma mediastinico	Archivos de bronconeumología	Articulo	1978
Trasplante cardiaco heterotopico experimental. consideraciones quirurgicas.	Revista española de cardiología	Articulo	1978

	Título proyecto	Tipo	Inicio	Fin
1	Perfil inmunológico e implicaciones pronósticas en cáncer de pulmón.	Proyecto	3/1/15	3/31/17

Actividades 0

Título actividad	Fuente	Tipo	Fecha
-------------------------	---------------	-------------	--------------

Colaboradores

- MARIA ESTHER FAREZ VIDAL (3)
- CLARA ISABEL BAYARRI LARA (2)
- JOSE ANTONIO GÓMEZ CAPILLA (2)
- FEDERICO GARRIDO TORRES-PUCHOL (1)
- JOSÉ ANTONIO LORENTE ACOSTA (1)
- MARIA TERESA MIRANDA LEON (1)
- María del Mar Valenzuela Membrives (1)